

h=40

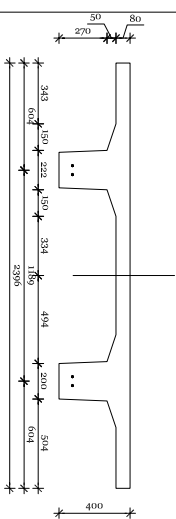
h=50

h=60

h=70

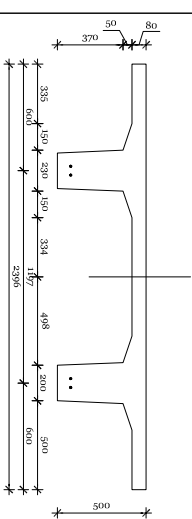
h=80

4 struny



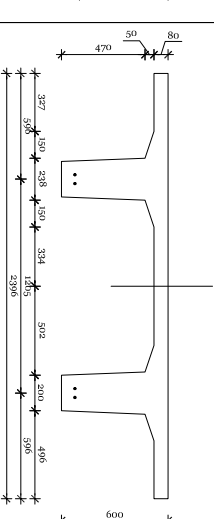
V = 0,3427 m³/mb
 Q = 8,57 kN/mb
 ciężar: 4x15,2mm - 4,37kg/mb

PLYTA
 TT240.40.R120.4.20



V = 0,3886 m³/mb
 Q = 9,71 kN/mb
 ciężar: 4x15,2mm - 4,37kg/mb

PLYTA
 TT240.50.R120.4.20



V = 0,4361 m³/mb
 Q = 10,90 kN/mb
 ciężar: 4x15,2mm - 4,37 kg/mb

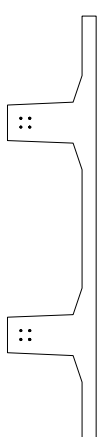
PLYTA
 TT240.60.R120.4.20

8 strun



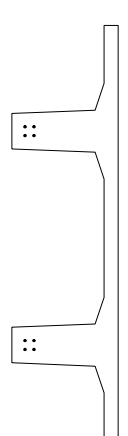
V = 0,3427 m³/mb
 Q = 8,57 kN/mb
 ciężar: 8x15,2mm - 8,76 kg/mb

PLYTA
 TT240.40.R120.8.20



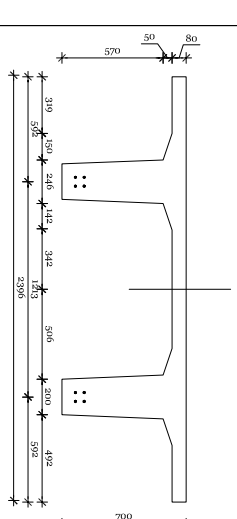
V = 0,3886 m³/mb
 Q = 9,71 kN/mb
 ciężar: 4x15,2mm - 8,76 kg/mb

PLYTA
 TT240.50.R120.8.20



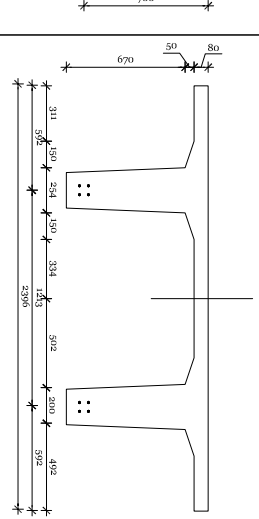
V = 0,4361 m³/mb
 Q = 10,90 kN/mb
 ciężar: 8x15,2mm - 8,76 kg/mb

PLYTA
 TT240.60.R120.8.20



V = 0,4852 m³/mb
 Q = 12,13 kN/mb
 ciężar: 8x15,2mm - 8,76 kg/mb

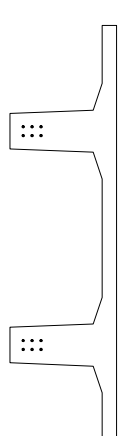
PLYTA
 TT240.70.R120.8.20



V = 0,5360 m³/mb
 Q = 13,40 kN/mb
 ciężar: 8x15,2mm - 8,76 kg/mb

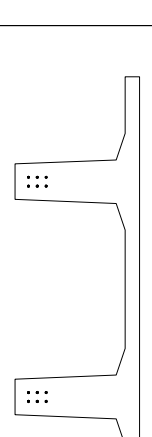
PLYTA
 TT240.80.R120.8.20

12 strun



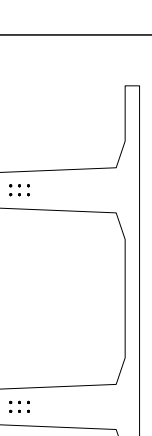
V = 0,4361 m³/mb
 Q = 10,90 kN/mb
 ciężar: 12 x15,2mm - 13,14 kg/mb

PLYTA
 TT240.60.R120.12.20



V = 0,4852 m³/mb
 Q = 12,13 kN/mb
 ciężar: 12 x15,2mm - 13,14 kg/mb

PLYTA
 TT240.70.R120.12.20



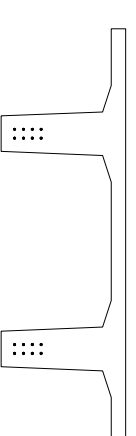
V = 0,5360 m³/mb
 Q = 13,40 kN/mb
 ciężar: 12 x15,2mm - 13,14 kg/mb

PLYTA
 TT240.80.R120.12.20

plyta TT

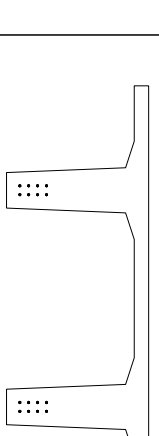
szerokość płyty: 239,6cm
grubość półki: 8,0cm
szerokość żebra: 20,0cm
ognioodporność: R120

16 strun



V = 0,4852 m³/mb
 Q = 12,13 kN/mb
 ciężar: 16 x15,2mm - 17,52 kg/mb

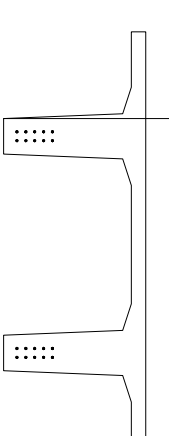
PLYTA
 TT240.70.R120.16.20



V = 0,5360 m³/mb
 Q = 13,40 kN/mb
 ciężar: 16 x15,2mm - 17,52 kg/mb

PLYTA
 TT240.80.R120.16.20

20 strun



V = 0,5360 m³/mb
 Q = 13,40 kN/mb
 ciężar: 20 x15,2mm - 21,90 kg/mb

PLYTA
 TT240.80.R120.20.20