

h=40

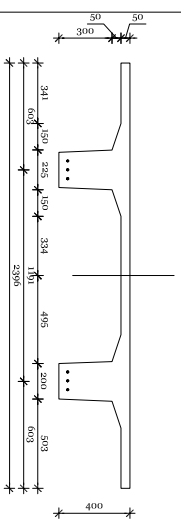
h=50

h=60

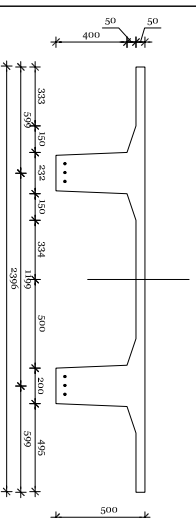
h=70

h=80

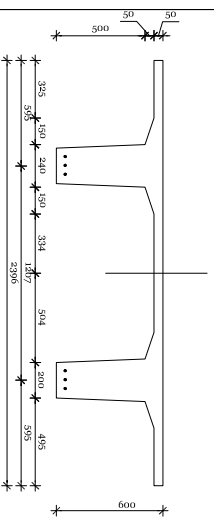
6 strum



V = 0,2846 m³/mb
 Q = 7,12 kN/mb
 cęgna: 6 x 15,2mm - 6,57kg/mb
 PLYTA
 TT240.40.R60.6.20

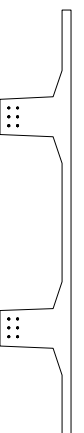


V = 0,3308 m³/mb
 Q = 8,27 kN/mb
 cęgna: 6 x 15,2mm - 6,57kg/mb
 PLYTA
 TT240.50.R60.6.20

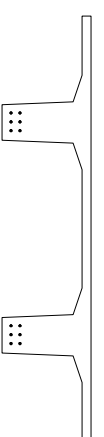


V = 0,3788 m³/mb
 Q = 9,47 kN/mb
 cęgna: 6 x 15,2mm - 6,57kg/mb
 PLYTA
 TT240.60.R60.6.20

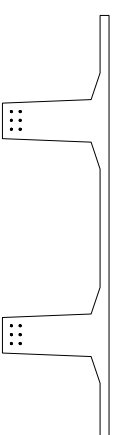
12 strum



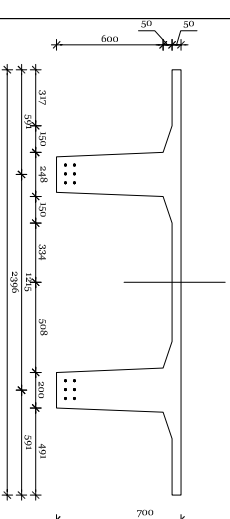
V = 0,2846 m³/mb
 Q = 7,12 kN/mb
 cęgna: 12 x 15,2mm - 13,14kg/mb
 PLYTA
 TT240.40.R60.12.20



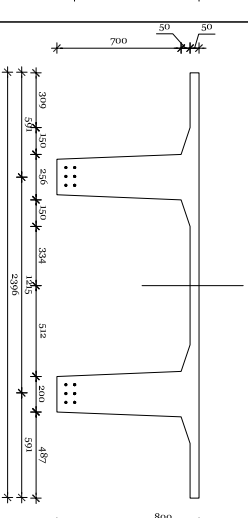
V = 0,3308 m³/mb
 Q = 8,27 kN/mb
 cęgna: 12 x 15,2mm - 13,14kg/mb
 PLYTA
 TT240.50.R60.12.20



V = 0,3788 m³/mb
 Q = 9,47 kN/mb
 cęgna: 12 x 15,2mm - 13,14kg/mb
 PLYTA
 TT240.60.R60.12.20

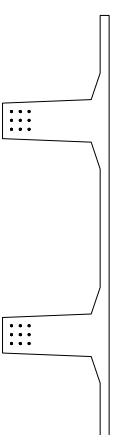


V = 0,4284 m³/mb
 Q = 10,71 kN/mb
 cęgna: 12 x 15,2mm - 13,14kg/mb
 PLYTA
 TT240.70.R60.12.20

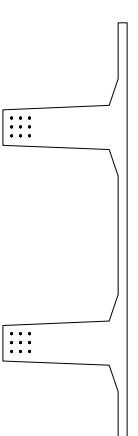


V = 0,4796 m³/mb
 Q = 11,99 kN/mb
 cęgna: 12 x 15,2mm - 13,14kg/mb
 PLYTA
 TT240.80.R60.12.20

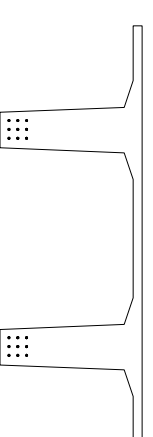
18 strum



V = 0,3788 m³/mb
 Q = 9,47 kN/mb
 cęgna: 18 x 15,2mm - 19,71kg/mb
 PLYTA
 TT240.60.R60.18.20

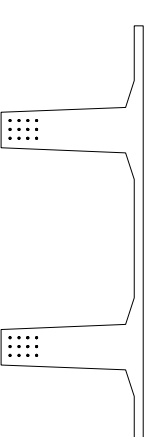


V = 0,4284 m³/mb
 Q = 10,71 kN/mb
 cęgna: 18 x 15,2mm - 19,71kg/mb
 PLYTA
 TT240.70.R60.18.20



V = 0,4796 m³/mb
 Q = 11,99 kN/mb
 cęgna: 18 x 15,2mm - 19,71kg/mb
 PLYTA
 TT240.80.R60.18.20

24 strumy



V = 0,4796 m³/mb
 Q = 11,99 kN/mb
 cęgna: 24 x 15,2mm - 26,28kg/mb
 PLYTA
 TT240.80.R60.24.20

plyta TT

szerokość płyty: 239,6cm
 grubość półki: 5,0cm
 szerokość żebra: 20,0cm
 ognioodporność: R60